

# ENERGY MANAGEMENT

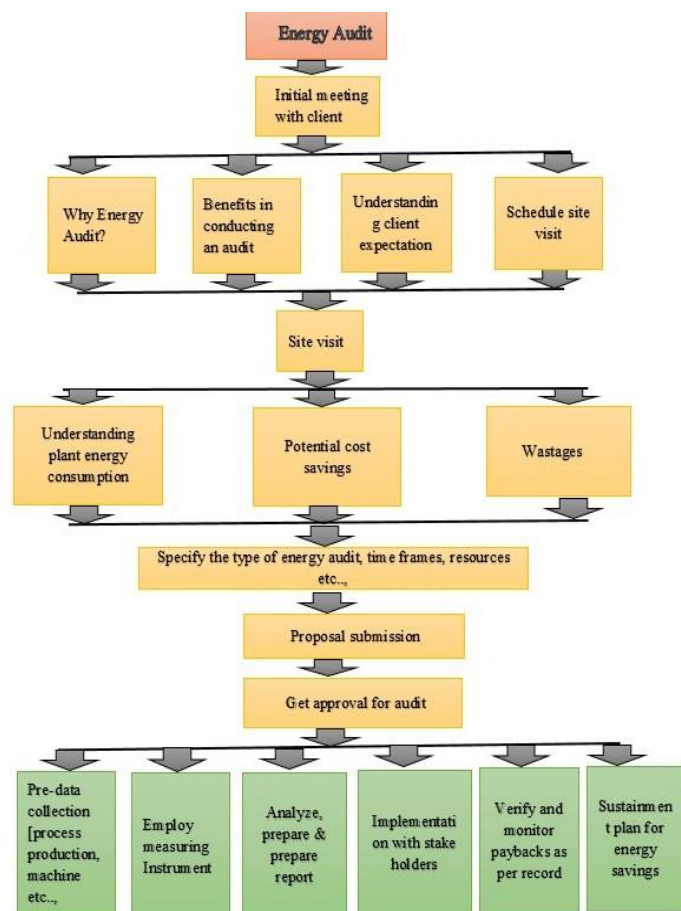
GES ENERGY SOLUTIONS LLP

# GES ENERGY AUDIT PROGRAMME

Fuel and electricity are major expenses in any business today. Ever increasing fuel prices and stricter regulations pertaining to commercial energy consumption has made it imperative for modern business to ensure optimum utilization of energy resources and convert to cheaper and more sustainable energy resources. Efficient energy consumption is crucial for the economic success of all companies.

At GES, we help our customers in improving the energy efficiency of their facility and aligning current consumption with current industry benchmarks.

GES is an Energy Consulting Company offering comprehensive, customized energy saving solutions to our customers. We provide end to end solutions to our clients designed to meet their energy requirements.



**SPECIALIZED AREAS OF AUDIT:**

- Power quality
- Furnace and Boiler
- Vibration Analysis
- Lighting
- HVAC
- Harmonic Analysis
- Thermography
- Compressed Air
- Water
- Steam audit
- Safety
- Flue gas Analysis
- Flow analysis

**Why Choose GES Audit?**

- Guaranteed savings
- Affordable consulting fees
- Cost effective solution
- Process and production-based energy analysis
- Research based solutions
- Energy management skill development for personnel
- Accredited energy auditors certified by BEE
- Complete solution with end to end product and service based on audit report
- Predict the problems before they translate into major failures
- Responsible for future energy related issues.
- Reconciliation of energy accounts
- Align recommendations and client’s energy program
- Peak demand management at work
- Assessing present pattern of energy consumption.
- Relating energy inputs and production output.
- Post audit implementation.
- Post audit performance monitoring.

**INDUSTRY SECTORS WE SERVE:**

- Residential Bungalows
- Office buildings
- Schools/Colleges
- Service apartments
- Hospitals
- Theaters
- Restaurants
- Hotels
- Service Providers
- Garments
- Softener Plant
- Multiplex
- Commercial Shops
- Foundry
- Spinning mills
- Paper & Pulp
- Automobiles
- Chemicals
- Oil Refinery
- Spinning Mills
- Substation
- Aluminum industry
- Iron & Steel
- Cement plant
- Beverage plant
- Sugar plant
- STP Plant
- RO plant
- Cold storage plant
- Manufacturing
- Dyeing units
- Power Plant

**SOME OF OUR PRESTIGIOUS CLIENTS**

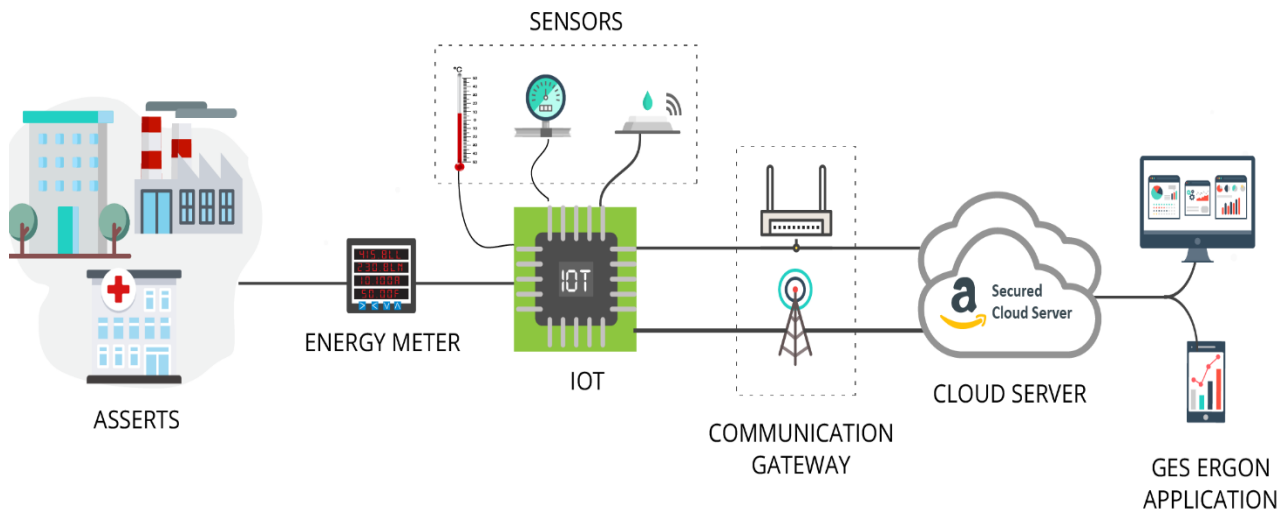


Energy Management is the means to control and reduce energy consumption and costs. Experts fall back in accurate decision making without energy data, GES offers ERGON, Energy Management System, a customizable portfolio of hardware and software to help improve energy efficiency and reduce greenhouse gas (GHG) emissions in energy intensive industrial processes. Users benefit from better energy management throughout their operations and increased profitability.

## Benefits of EMS

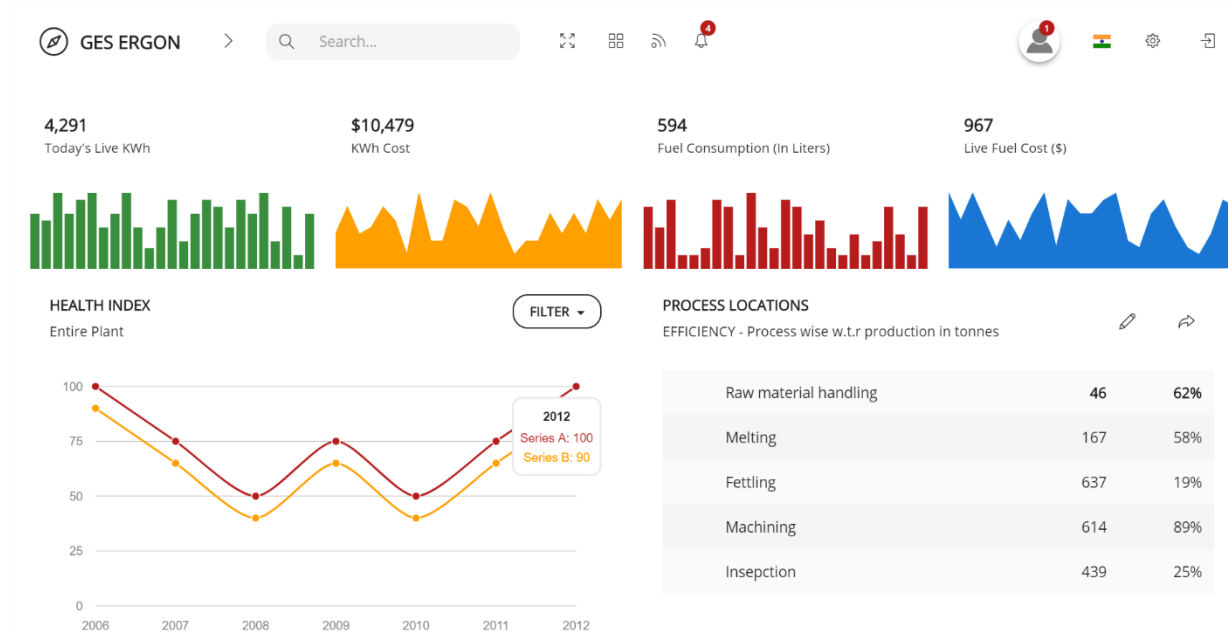
1. Reduce energy costs by at least 20%
2. Reduce carbon footprint
3. Improve productivity
4. Improve safety
5. Better maintenance planning and scheduling
6. Quick analysis of return on investment and budgeting

## How it works?

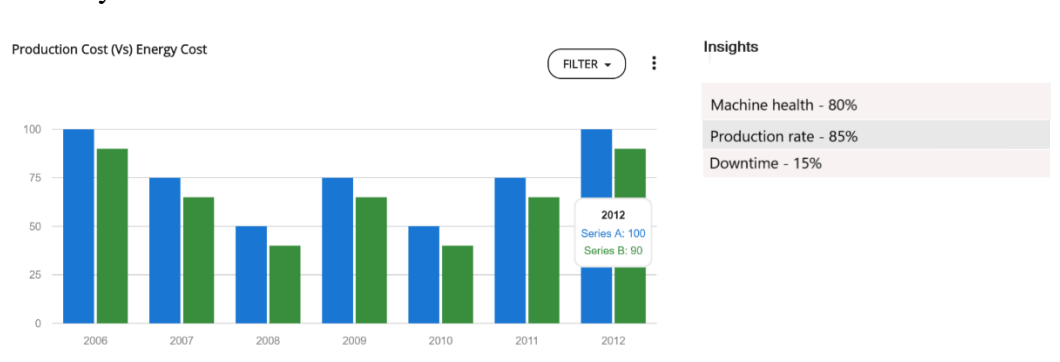


## Why Choose ERGON?

- Trained professionals and BEE accredited auditors in the development of ERGON.
- Easy to understand and user-friendly insights
- Easy integration of electrical and physical data in single platform
- Highly secured dedicated server for data storage
- Compatible economics for Indian/International marketing
- Backend monitoring support
- Real time tracking (every second)

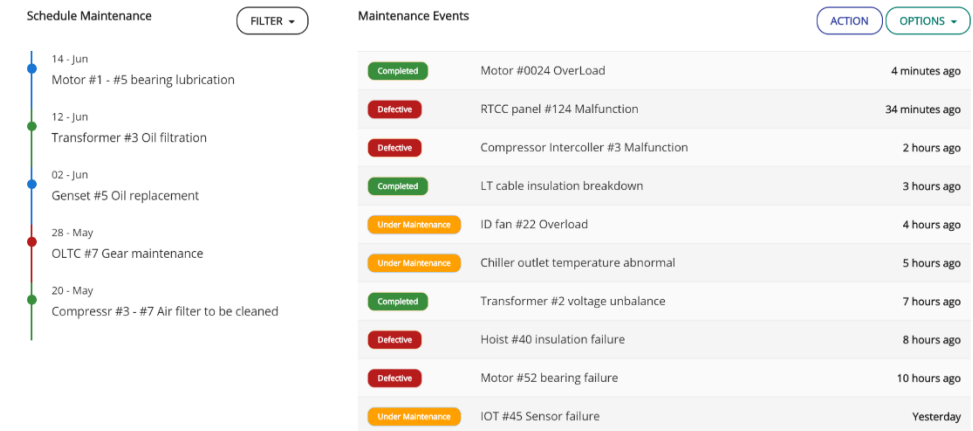


- Recommendation on energy deviation
- Data analytics based on IEEE format



- Remote Machine On/Off
- Multiple sensor plugins

- IOT device compatible with most energy meters
- SMS & e-mail alerts during abnormalities
- Online troubleshooting



Sensor Health details

Sensor Machine Name	Sensor Type	Sensor Status	Last Communicated	Sensor Location	Fault Type
Cooling tower	Temperature sensor	Inactive	20-Jun-2018/11:22 A.M	Office building	Sensor defect
Compressor	Pressure Sensor	Active	05-Jun-2018/01:02 P.M	Compressor room	No fault
Motor	Vibration Sensor	Inactive	01-Jul-2018/10:00 P.M	Machine shop	IOT Port defect
Disel tank	Flow Sensor	Active	05-Jul-2018/02:08 P.M	Fuel storage area	No fault

- User friendly and responsive web application
- 24x7 support service
- Secured AWS cloud server
- Easy reports download
- 256-bit Advanced Encryption Standard (AES-256 bit)
- Improved machine learning techniques
- SSL/TLS certificated for secure network communications.
- AWS Certificate Manager (ACM) and Private Certificate Authority (CA) for secure communication between IoT devices, servers and applications.